







## ECO-oh! CATALOG

# TABLE OF CONTENTS

	<b>GARDEN EDGING</b>	<b>4</b>
	<ul style="list-style-type: none"> <li>› Ecolat 4</li> <li>› Ecopic 8</li> <li>› Ecopic impact head 10</li> <li>› Ecoplanc 12</li> </ul>	
	<b>CREATIVE GARDENING</b>	<b>15</b>
	<ul style="list-style-type: none"> <li>› Compost bin 15</li> <li>› Vegetable garden 18</li> </ul>	
	<b>CONSTRUCT</b>	<b>20</b>
	<ul style="list-style-type: none"> <li>› Board 20</li> <li>› Steel-reinforced profiles 22</li> <li>› Solid profiles 25</li> <li>› Hollow profiles 29</li> </ul>	
	<b>POS MATERIAL</b>	<b>30</b>
	<b>PUBLIC</b>	<b>34</b>
	<ul style="list-style-type: none"> <li>› U-bench 36</li> <li>› H-bench 40</li> <li>› Altamira 44</li> <li>› Park series 46</li> <li>› Forest series 48</li> <li>› Picnic sets 50</li> <li>› Anchoring 52</li> <li>› Planters 53 <ul style="list-style-type: none"> <li>Quercus 54</li> <li>Aesculus 57</li> <li>Pyrus 59</li> </ul> </li> <li>› Posts 61</li> </ul>	

# ECO-oh!

*Let's recycle for life.*



## IT STARTS WITH YOU SORTING AT HOME!

Look around you, there is domestic plastic waste everywhere. Plastic pots, tubs, bags, films, etc. are used all the way from the kitchen to the garden. At ECO-oh! we would like to inspire you to separate such plastic waste, allowing us to recycle it ecologically into a valuable raw material and then transform this into 100% recyclable products. By doing this we can reduce the mountain of waste, provide a sustainable alternative to incineration and produce plastics that appeal to nature. This is better for the environment and for the well-being of future generations.

## WHEN YOU OPT FOR ECO-OH!, YOU'RE MAKING AN ENVIRONMENTALLY AND COSTCONSCIOUS DECISION.

Choose ECO-oh! for a stylish and sustainable garden. Our products are there to help garden lovers give shape to their garden in a creative and flexible manner. These boast two key characteristics: economical and ecological. Economical, because the products require little maintenance, are water- and damp-resistant, are long-lasting and are easy to install. Ecological, because they are made from 100% recycled plastic waste and can be 100% recycled once again after their useful life.

Be inspired by our range of sustainable products for gardening, construct and public furniture, and enjoy the many benefits. By doing so, we are using plastics that appeal to nature to help make gardens beautiful, the planet cleaner and people happy.



100% recycled & recyclable



Rot-resistant



Weather-resistant



Easily processed



Maintenance-free



Long-lasting



Harmless

# GARDEN EDGING

## ECO-OH! GARDEN EDGING

Durable, sustainable garden edging that is just as easy to work with as wood, is rot-proof, and is completely environmentally friendly? ECO-oh!'s got it.

ECOLAT®

Beautiful garden edging for the lawn, garden path, border, vegetable garden and pond is better if it is sustainable and easy to install.

Ecolat is available in long, straight pieces for sleek, linear borders and pliant on a roll for bends and slopes.

With its natural look, Ecolat fits sleekly into both private gardens and public spaces. Ecopic stakes firmly secure the Ecolat in place.



### ADVANTAGES

- ✓ Ecological: made from 100% recycled plastic waste
- ✓ Rot-resistant: exceptionally long service life
- ✓ Flexible, rolled edging: ideal for curved borders (not suitable for straight borders)
- ✓ Straight edging in slats: ideal for sleek, straight borders
- ✓ Easy to transport (rolled)
- ✓ Easy to process and install
- ✓ Suitable for garden paths, flower beds, vegetable garden, pond and lawn edging
- ✓ Installation with Ecopic stakes – high stability guaranteed



## ROLLED ECOLAT

Art. nr.	Dimensions	Weight (kg)	Colour	Units/ packaging	Units/ pallet
<b>E10/14</b>	10m x 14cm x 0,7cm	12	grey	1	24
<b>E10/14BR</b>	10m x 14cm x 0,7cm	12	brown	1	24
<b>E10/14BK</b>	10m x 14cm x 0,7cm	12	black	1	24
<b>E25/14</b>	25m x 14cm x 0,7cm	30	grey	1	10
<b>E25/14BR</b>	25m x 14cm x 0,7cm	30	brown	1	10
<b>E25/14BK</b>	25m x 14cm x 0,7cm	30	black	1	10
<b>E25/19</b>	25m x 19cm x 0,7cm	40	grey	1	10
<b>E20/14</b>	20m x 14cm x 0,7cm	24	grey	1	24
<b>E20/14BR</b>	20m x 14cm x 0,7cm	24	brown	1	24



E25/14 | E25/19



E25/14BR



E10/14

## NEW LABEL ECOLAT

The new Ecolat label explains our message and informs how to use Ecolat in combination with Ecopic

### Ecolat®

18 M X 14 CM 393,70"x5,51"

TUIN EN VIJVER AFBOORDING - POND AND GARDEN EDGING  
BORDURE POUR JARDIN ET BORD D'ÉTANG  
RANDELEISTEN FÜR TEICH UND GARTEN

100% RECYCLED PLASTIC  
100% RECYCLABLE

5 400929 504934

E10/14

Montage instructies op  
Assembly instructions on  
[www.eco-oh.com](http://www.eco-oh.com)  
Mode d'emploi sur  
Montageanleitung auf

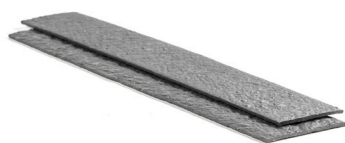
EENVOUDIGE MONTAGE  
EASY TO ASSEMBLE

1 2 3 4

FACILE À POSER  
LEICHT ZU MONTIEREN

## ECOLAT STRAIGHT

Art. nr.	Dimensions	Weight (kg)	Colour	Units/ packaging	Units/ pallet
<b>E2/14</b>	2m x 14cm x 1cm	3	grey	4	320
<b>E2/14BR</b>	2m x 14cm x 1cm	3	brown	4	320
<b>E2/14BK</b>	2m x 14cm x 1cm	3	black	4	320
<b>E3/14</b>	3m x 14cm x 1cm	4,5	grey	1	320
<b>E2/19</b>	2m x 19cm x 1cm	4	grey	4	240



E2/14 | E2/19 | E3/14



E2/14BR



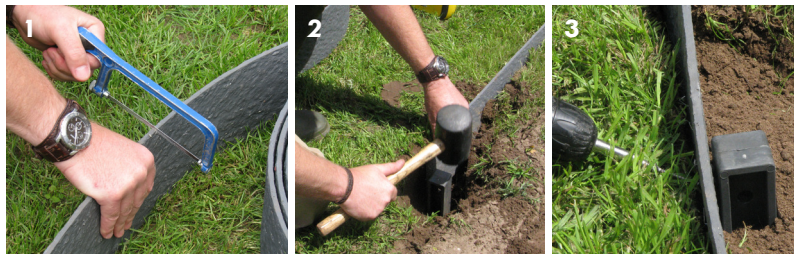
Find assembly instructions and inspiring video on our Youtube channel:



## EASY INSTALLATION: ECOLAT GARDEN EDGING

Ecolat is partially buried and secured firmly in the ground using Ecopic stakes.

- 1 Lay out the Ecolat where the edging will ultimately go. Rolled Ecolat will then unroll itself. Dig a small trench and lay the Ecolat in it. Preferably put a minimum of two-thirds of the Ecolat in the ground.
- 2 Use a rubber hammer to pound the Ecopic stakes into the ground. The H-profile guarantees high stability. The stakes are approx. 3 cm lower than the top of the Ecolat and will not be visible when the installation is complete. Depending on the intended use, install the stakes at least every 50 cm.
- 3 Secure the Ecolat to the Ecopics using stainless steel screws (2 per stake). A spirit level is useful in creating a lovely, even result. Fill in the side of the garden border using soil, wood mulch, stones, etc.



---

## EASY INSTALLATION: ECOLAT POND EDGING

For a beautiful edging to your pond, it is vital that the Ecolat is perfectly level: it will determine the maximum water level.

- 1 Pound the Ecopic stakes into the ground and secure the Ecolat to the Ecopics.
- 2 Lay a protective membrane in the pond and over the edge of the Ecolat. This membrane protects the pond liner from friction and sharp objects in the ground.
- 3 Then lay the pond liner so that it also comes over the edge of the Ecolat and finish it neatly on the outer edge.





### ECOPIC H-PROFILE - PACKAGE OF 10

Art. nr.	Dimensions	Weight (kg)	Colour	Units/ packaging	Units/ pallet
<b>H4038</b>	38 x 4 x 4cm	0,3	grey	10	1500
<b>H4038BR</b>	38 x 4 x 4cm	0,3	brown	10	1500
<b>H4138*</b>	38 x 4 x 4cm	0,3	grey	10	1500
<b>H4138BR*</b>	38 x 4 x 4cm	0,3	brown	10	1500
<b>H4058</b>	58 x 4 x 4cm	0,4	grey	10	900

\*with 20 screws

H4038(P)



H4038BR(P)

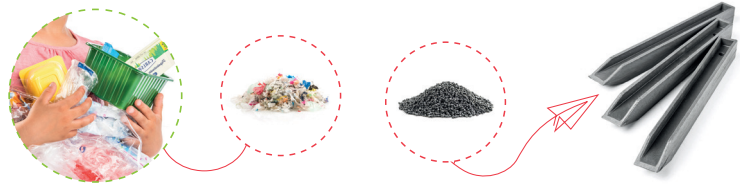


H4058(P)



### ECOPIC H-PROFILE - UNPACKAGED - FULL PALLETS

Art. nr.	Dimensions	Weight (kg)	Colour	Units/ packaging	Units/ pallet
<b>H4038P</b>	38 x 4 x 4cm	0,3	grey	960	960
<b>H4038BRP</b>	38 x 4 x 4cm	0,3	brown	960	960
<b>H4058P</b>	58 x 4 x 4cm	0,4	grey	560	560



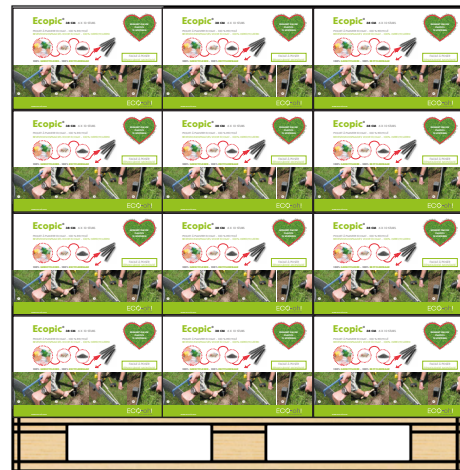
### ECOPIC H-PROFILE – BOX OF 6 PACKAGES OF 10

Art. nr.	Dimensions box	Weight (kg)	Colour	Units/ packaging	Units/ pallet
<b>D6-H4038</b>	40 x 34 x 27cm	18	grey	60	576 (16 boxes) 2160 (36 boxes)
<b>D6-H4038BR</b>	40 x 34 x 27cm	18	brown	60	576 (16 boxes) 2160 (36 boxes)

Units/pallet 576 (16 boxes)



Units/pallet 2160 (36 boxes)



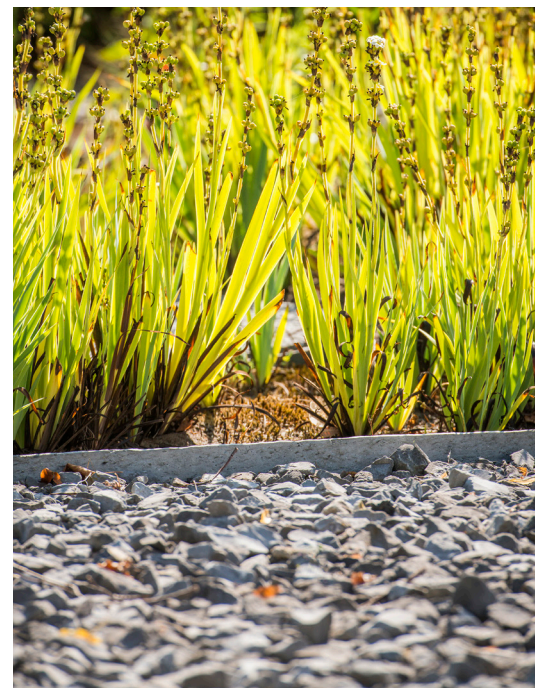
## GARDEN EDGING

### IMPACT HEAD FOR ECOPIC



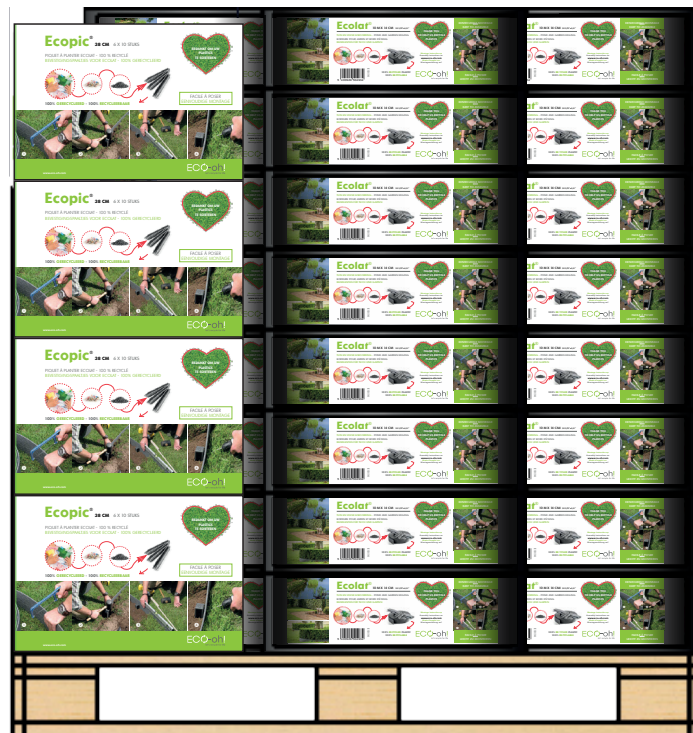
Art. nr.	Dimensions	Weight (kg)	Colour	Units/ packaging
<b>E4000</b>	20 x 10cm	1	grey	1

The impact head provides a larger impact surface, which enables a quick and easy installation of Ecopic stakes.



**RETAIL PALLET DISPLAY: ECOLAT 10M & ECOPIC 38CM**

Art. nr.	Dimensions	Weight (kg)	Colour	Units/packaging
<b>POO1</b>	1,2 x 0,8 x 1,02m	410	grey	4 x D6-H4038 24 x E10/14
<b>POO1BR</b>	1,2 x 0,8 x 1,02m	410	brown	4 x D6-H4038BR 24 x E10/14BR



## ECOPLANC®

This multifunctional, hollow profile brings its robust sustainability to any project. For example, the edging of a garden border or garden path, the construction of a square foot garden, herb garden, vegetable garden, sandbox, etc.

Light and easy to use, Ecoplanc combinations create a charming unit within numerous green spaces. Ecoplanc profiles are easy to use in mitred projects.

The Ecoplanc Connect corner profiles also open up a lot of possibilities: simply hammer the corner profile into the ground and slide your Ecoplanc in. The system is completely modular: the length, width and height can be adjusted.

### ECOPLANC

Art. nr.	Dimensions	Weight (kg)	Colour	Units/ packaging	Units/ pallet
<b>EP1.2</b>	22cm x 4cm x 120cm	4,4	grey	1	100
<b>EP2.0</b>	22cm x 4cm x 200cm	7,4	grey	1	100
<b>67100E</b>	22 x 4 x ...lm	*	grey	1	**

\* length as required  
\*\* minimum order 100 pieces



## ECOPLANC CONNECT CORNER PROFILE

Art. nr.	Dimensions	Weight (kg)	Colour	Units/ packaging	Units/ pallet
<b>700250</b>	11,5cm x 15cm x 22cm	1,2	grey	2	300
<b>700251</b>	11,5cm x 15cm x 44cm	2,4	grey	2	140
<b>700255</b>	11,5cm x 15cm x 100cm	5,5	grey	1	80
<b>5058E</b>	11,5cm x 15cm x 200cm	11	grey	1	80



## END CAP FOR ECOPLANC CONNECT CORNER PROFILE

Art. nr.	Dimensions	Weight (kg)	Colour	Units/ packaging
<b>700260</b>	15 x 11 cm	0,06	grey	20



## GARDEN EDGING



### ECOPLANC & CONNECT: SIMPLE INSTALLATION IN NO TIME.

Ecoplanc is mitred or secured using EcoPlanc Connect corner profiles. The system is completely modular: the length, width and height can be adjusted.

- 1 Hammer the EcoPlanc Connect corner into the ground vertically.  
Slide the EcoPlanc into the corner profile and use a spirit level to make sure it's straight.
- 2 Move on to the next EcoPlanc.
- 3 Hammer an Ecopic stake into the corner profile to provide extra stability.



## ECO-OH! CREATIVE GARDENING

Recycling your organic garden and kitchen waste in a container with a practically unlimited life, or using a vegetable garden, made of recycled plastic waste.

Can it get any more environmentally friendly?

### COMPOST BIN

The ECO-oh! compost bin is a modular system with endless combinations. By placing 2 or 3 compost bins next to each other, it is possible to move compost from one container to the next.

The sustainable material is UV-resistant, waterproof and rot-proof. The high insulation reduces heat loss and benefits the composting process, as does the necessary aeration of this well-thought construction.



#### COMPOST BIN – BASE MODULE 1300L

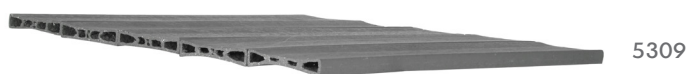
Art. nr.	Dimensions	Weight (kg)	Colour	Units/ packaging	Units/ pallet
Unpackaged <b>5307</b>	100cm x 120cm x 100cm	90	grey	5	5
Packaged <b>5307VP</b>	100cm x 120cm x 100cm	96	grey	1	5

## CREATIVE GARDENING



### COVER FOR COMPOST BIN 1300L

Art. nr.	Dimensions	Weight (kg)	Colour	Units/ packaging	Units/ pallet
Unpackaged <b>5309</b>	110cm x 140cm	26	grey	20	20
Packaged <b>5309VP</b>	110cm x 140cm	26	grey	1	20



5309

### REINFORCEMENT SLAT FOR COMPOST BIN 1300L

Art. nr.	Dimensions	Weight (kg)	Colour	Units/ packaging	Units/ pallet
<b>5010</b>	120cm x 11cm x 4cm	2,2	grey	1	200



### ECOPLANC DIVIDER FOR COMPOST BIN

Art. nr.	Dimensions	Weight (kg)	Colour	Units/ packaging
<b>700259</b>	box of 25	0,13	grey	25

700259



### COMPOST BIN – EXTENSION MODULE 1300L

Art. nr.	Dimensions	Weight (kg)	Colour	Units/ packaging	Units/ pallet
Unpackaged <b>5308</b>	100cm x 120cm x 100cm	61	grey	5	5
Packaged <b>5308VP</b>	100cm x 120cm x 100cm	64	grey	1	5



## VEGETABLE GARDEN

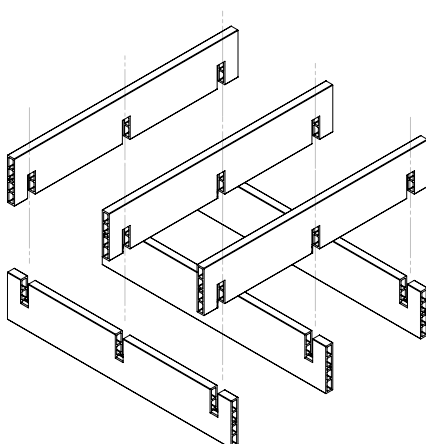
This DIY model is constructed easily using six light, manageable EcoPlanc profiles that fit together in a breeze. Square foot gardening, or combining several vegetable garden containers, was never this easy. An easy vegetable garden with sustainability and ecology in its purest form. This vegetable garden container is made of 100% recycled plastic waste and is fully recyclable at the end of its life.

Environmentally friendly, weather-resistant, no splinters, maintenance-free and rot-proof. A sustainable alternative to wood. The garden box guarantees years of vegetable gardening enjoyment.



### VEGETABLE GARDEN - GARDEN BOX

Art. nr.	Dimensions	Weight (kg)	Colour	Units/ packaging	Units/ pallet
<b>700760VP</b>	120cm x 120cm x 22cm	26	grey	1	20



---

**RETAIL PALLET DISPLAY: COMPOST BIN + EXTENSION**

---



---

**RETAIL PALLET DISPLAY: VEGETABLE GARDEN BOX**

---



## ECO-OH! CONSTRUCT

The ECO-oh! ecological building materials transcend the usual offer. Not only are they reliable and solid, but they are made from 100% recycled plastic waste that is 100% recyclable. They are water- and moisture-resistant and completely rot-proof, which means they are a sustainable alternative to wood. In addition, they can efficiently be put into place and worked, which is a huge plus.



## BOARD

The Board panel is a versatile, sturdy panel with a coarse inner layer and a smooth, fine outer layer. It is an excellent alternative to wooden panels and has excellent properties for use in all types of construction applications.

Easy to handle and with an extra long life, these plastic panels have proven to be resistant to water and moisture while being splinter-proof, maintenance-free and rot-proof.

Board panels can be processed in much the same way as wood - drilling, milling and sawing. They can be connected by means of screws and connection fittings.

They are available in widths of 12 mm and 19 mm, with or without anti-slip surface treatment, in dark-grey, green, blue or red.

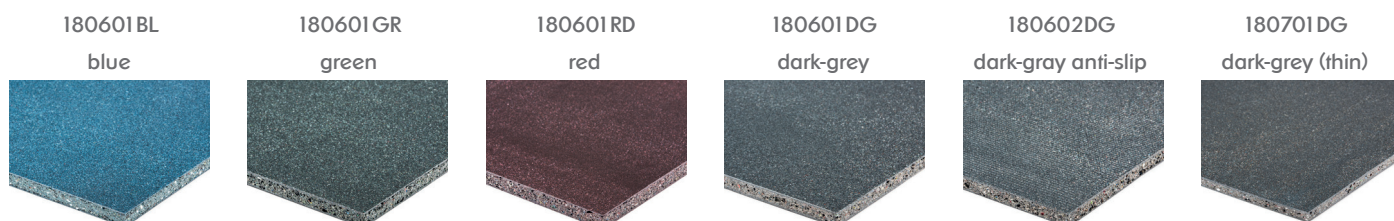
These plastic panels give plastic waste a second life. They fit perfectly into the ecological building materials series. An investment in sustainability and the environment.



## BOARD

Art. nr.	Dimensions	Weight (kg)	Colour	Units/ packaging
<b>180601BL</b>	19mm x 122cm x 244cm	33	blue	40
<b>180601DG</b>	19mm x 122cm x 244cm	33	dark-grey	40
<b>180601GR</b>	19mm x 122cm x 244cm	33	green	40
<b>180601RD</b>	19mm x 122cm x 244cm	33	red	40
<b>180602DG</b>	19mm x 122cm x 244cm	33	dark-grey anti-slip	40
<b>180701DG</b>	12mm x 122cm x 244cm	22	dark-grey	50

Available in widths of 12 mm and 19 mm, with or without anti-slip surface treatment, in dark-grey, green, blue or red.



### POSSIBLE USES

- ✓ Garden and agricultural applications such as separation walls for animals and animal cages
- ✓ Architectural applications such as concrete formwork
- ✓ Furniture, street furniture, public toilets and washbasins, table tops, etc.
- ✓ Shoring up banks
- ✓ Yard fences
- ✓ Publicity signs, footpath signs
- ✓ Bottom and side panels for trailers (load floors)
- ✓ Garden shed roofs
- ✓ Public waste disposal bins and flower boxes



## STEEL-REINFORCED PROFILES

The steel-reinforced profile is hollow with a neutral grey core and a coloured outer layer. Thanks to the steel reinforcement, the maximum load is doubled compared to the non-steel reinforced profiles. Thermal expansion of the steel reinforcement is limited.

The profiles have an extra-long service life, are resistant to water and moisture, and are shatterproof, maintenance-free and rot-proof.

- ✓ Multiple applications in the house and garden
- ✓ Urban development projects
- ✓ Industrial projects
- ✓ Agricultural and horticultural projects

The standard length of a profile is 6.2 meters. These are cut to size as required. The ends can be covered with an end cap if needed.



### STEEL-REINFORCED PROFILE - RECTANGLE - 4 X 12 X 620CM

Art. nr.	Dimensions	Weight (kg)	Colour	Units/ packaging
<b>50100BE</b>	4 x 12 x 620cm	25	beige	54
<b>50100BL</b>	4 x 12 x 620cm	25	blue	54
<b>50100DG</b>	4 x 12 x 620cm	25	dark-grey	54
<b>50100LG</b>	4 x 12 x 620cm	25	light-grey	54
<b>50100NG</b>	4 x 12 x 620cm	25	neutral-grey	54
<b>50100OG</b>	4 x 12 x 620cm	25	olive-green	54

**STEEL-REINFORCED PROFILE - RECTANGLE - 6 X 18 X 620CM**

Art. nr.	Dimensions	Weight (kg)	Colour	Units/ packaging
<b>51100BE</b>	6 x 18 x 620cm	39	beige	32
<b>51100BL</b>	6 x 18 x 620cm	39	blue	32
<b>51100DG</b>	6 x 18 x 620cm	39	dark-grey	32
<b>51100LG</b>	6 x 18 x 620cm	39	light-grey	32
<b>51100NG</b>	6 x 18 x 620cm	39	neutral-grey	32
<b>51100OG</b>	6 x 18 x 620cm	39	olive-green	32



beige



blue



dark-grey



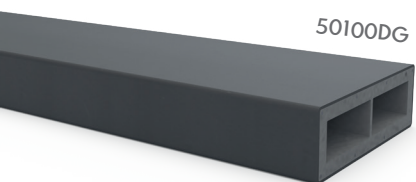
light-grey



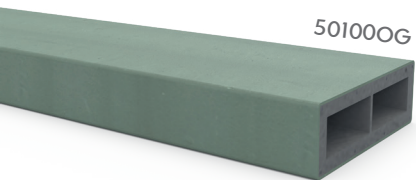
neutral-grey



olive-green



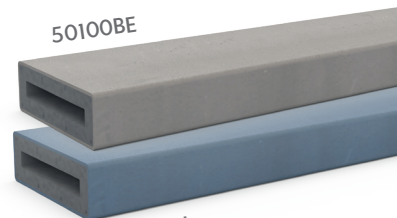
50100DG



50100OG



50100NG

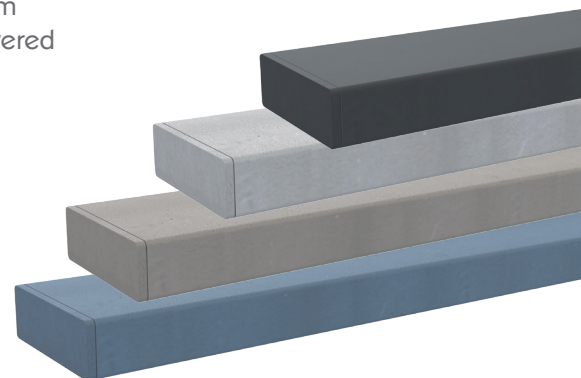


50100BE



50100BL

The standard length of a profile is 6.2 meters.  
 These are cut to size as required.  
 Only the profile with section 4 x 12 cm  
 can be manufactured in order to be covered  
 with a plastic end cap



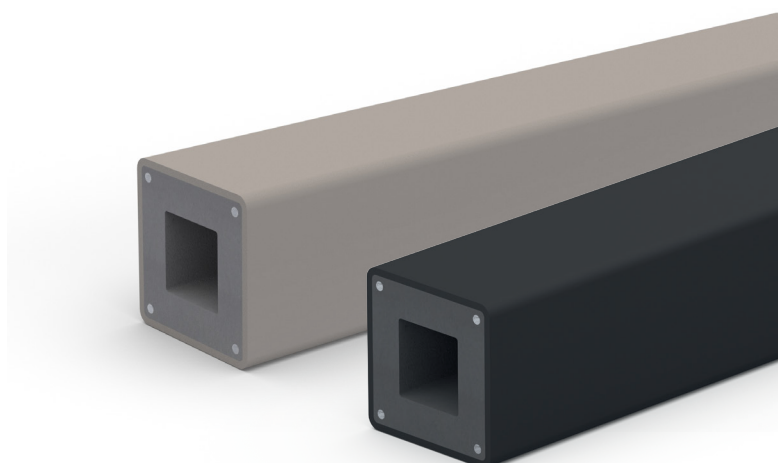
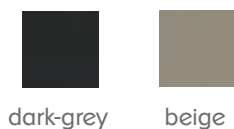
## STEEL-REINFORCED PROFILE - ROUND

Art. nr.	Dimensions	Weight (kg)	Colour	Units/ packaging
<b>52100NG</b>	5 x 620cm	11	neutral-grey	93
<b>53100NG</b>	9 x 620cm	22	neutral-grey	93



## STEEL-REINFORCED PROFILE - SQUARE

Art. nr.	Dimensions	Weight (kg)	Colour	Units/ packaging
<b>55100DG</b>	5,2 x 5,2 x 620cm	13	dark-grey	105
<b>55100BE</b>	5,2 x 5,2 x 620cm	13	beige	105



## SOLID PROFILES

### **Your constructions will be sturdy, reliable and durable**

ECO-oh! offers solid plastic profiles in different designs: round, square and rectangular. Made from 100% recycled plastic waste and durable as they are, they also have unique characteristics: they do not rot; there are no splinters; they are easy to handle and work; and they are environmentally friendly and safe. A valuable alternative to wood.

The scope of application of these profiles is wide. In addition to achievements in home and garden, they can also be used in urban, industrial, agricultural and horticultural projects.



## SOLID PROFILE - RECTANGULAR

Art. nr.	Dimensions	Weight (kg)	Colour	Units/ packaging
<b>7101</b>	5 x 8 x 200cm	7	grey	150
<b>7107</b>	6 x 20 x 200cm	21	grey	60
<b>7108</b>	6 x 27 x 200cm	29	grey	40
<b>7109</b>	7 x 25 x 217cm	35	grey	50
<b>7110</b>	8 x 19 x 200cm	25	grey	48
<b>7111</b>	8 x 25 x 200cm	34	grey	40



Art. nr.	Dimensions	Weight (kg)	Colour	Units/ packaging
<b>55100DG</b>	5,2 x 5,2 x 620cm	13	dark-grey	105
<b>7102E</b>	6 x 12 x 200cm	12,50	grey	100
<b>7145E</b>	6 x 12 x 360cm	22,50	grey	80
<b>7105E</b>	6 x 15 x 200cm	15	grey	80
<b>7117E</b>	6 x 15 x 360cm	27	grey	60






---

**SOLID PROFILE - ROUND**

---

Art. nr.	Dimensions	Weight (kg)	Colour	Units/ packaging
<b>6203</b>	10 x 150cm	11	grey	66
<b>6204</b>	10 x 200cm	14	grey	66
<b>6205</b>	10 x 250cm	17	grey	45
<b>6206</b>	15 x 75cm	13	grey	21
<b>6211</b>	15 x 200cm	34	grey	21
<b>6212</b>	15 x 280cm	47	grey	21



## SOLID PROFILE - SQUARE

Art. nr.	Dimensions	Weight (kg)	Colour	Units/ packaging
<b>6801</b>	7 x 7 x 150cm	7	grey	160
<b>6802</b>	8.5 x 8.5 x 160cm	10	grey	84
<b>6803</b>	8.5 x 8.5 x 180cm	15	grey	84
<b>6804</b>	8.5 x 8.5 x 200cm	15	grey	84
<b>6805</b>	10 x 10 x 180cm	16	grey	60
<b>6806</b>	12 x 12 x 150cm	21	grey	60
<b>6807</b>	12 x 12 x 180cm	24	grey	60
<b>6812</b>	12 x 12 x 200cm	27	grey	60
<b>6808</b>	12 x 12 x 220cm	30	grey	60
<b>6809</b>	14 x 14 x 150cm	26	grey	48



## HOLLOW PROFILES

This hollow profile is multifunctional and durable. Made from recycled plastic waste and enjoying the valuable ECO-oh! product features: water- and moisture-resistant, splinter-proof, rot-proof and maintenance-free.

### HOLLOW PROFILE - RECTANGLE

Art. nr.	Dimensions	Weight (kg)	Colour	Units/ packaging
<b>7102EH</b>	6x 12 x 200cm	9	grey	80
<b>7102EH/3.6</b>	6 x 12 x 360cm	17	grey	60
<b>7105EH/2.0</b>	6 x 15 x 200cm	12	grey	80
<b>7105EH/3.6</b>	6 x 15 x 360cm	22	grey	60

The length of this profile can be adapted to your desired length.



## ECO-OH! POS MATERIAL

ECO-oh! supports its partners with high-quality promotional material with the ECO-oh! brand. Please inquire for ordering conditions and prices.



## POS MATERIAL

Art. nr.	Description	Dimensions
<b>PROMO03</b>	BANNER	3m x 1m
<b>PROMO04</b>	STORE PANEL	80 x 80cm
<b>PROMO01</b>	ROLL-UP DISPLAY ECOLAT / ECOPIE	85 x 200cm
<b>PROMO02</b>	ROLL-UP DISPLAY ECOPLANC / CONNECT	85 x 200cm
<b>PROMO08</b>	ROLL-UP DISPLAY RECYCLING	85 x 200cm
<b>PROMO13</b>	RETAIL DISPLAY UNIT ECOLAT	190 x 120 x 68cm
<b>PROMO09</b>	BEACHFLAG	65 x 210cm
<b>PROMO10</b>	SUPPORT & POLE FOR BEACH FLAG	

## BANNER 3 X 1 M



# Eco-oh!

let's recycle for life

We recycle plastic household waste into sustainable products that are 100% recyclable.







www.eco-oh.com









- ✓ PVC banner with holes every 30 cm
- ✓ Suitable for outdoor use

STORE PANEL 80 X 80 CM

**ECO-oh!**  
let's recycle for life

We recycle plastic household waste into sustainable products that are 100% recyclable

100% RECYCLED  
91% RECYCLED

100% recycled & recyclable  
Rot-resistant  
Weather-resistant  
Easily processed  
Maintenance-free  
Long-lasting  
Harmless

[www.eco-oh.com](http://www.eco-oh.com)

- ✓ Solid panel with two drill holes at the top
- ✓ Suitable for outdoor use

ROLL-UP DISPLAYS 85 X 200 CM

**ECO-oh!**  
let's recycle for life

We recycle plastic household waste into sustainable products that are 100% recyclable

**Ecolat® / Ecopic®**

[www.eco-oh.com](http://www.eco-oh.com)

**ECO-oh!**  
let's recycle for life

We recycle plastic household waste into sustainable products that are 100% recyclable

**MORGEN WORDT RECYCLEN  
VANZELFSPREKEND**

[www.eco-oh.com](http://www.eco-oh.com)

**ECO-oh!**  
let's recycle for life

We recycle plastic household waste into sustainable products that are 100% recyclable

**Ecoplanc® / Connect®**

[www.eco-oh.com](http://www.eco-oh.com)

Can be lent temporarily for your exhibitions, trade shows, ...

---

RETAIL DISPLAY 192 X 120 X 62 CM

---

- All-in-one concept for
- ✓ Ecolat (rolled/straight)
  - ✓ Ecopics & brochures



---

BEACHFLAG 65 X 210 CM

---

## PUBLIC - STREET FURNITURE

### ECO-OH! PLASTICS THAT BENEFIT NATURE! FOR A CLEANER PLANET AND HAPPY PEOPLE

At ECO-oh!, it makes us happy to know that our creations are finding their way into beautiful gardens and parks throughout the city. This allows us to use our sustainable benches, picnic tables and planters to create spaces where people can enjoy connecting with one another. This is how we help shape a cleaner planet with happy people, using plastics that benefit nature. Be inspired at [www.eco-oh.com](http://www.eco-oh.com)!





## ECO-OH! STREET FURNITURE BRINGS PURE ECOLOGY TO PUBLIC AREAS

Ecological awareness continues to grow in consumers. The sorting of plastic household waste is becoming standard behaviour to consumers. That's why environmentally-conscious cities and municipalities offer their citizens the opportunity to sort their plastic waste.

At ECO-oh!, we recycle this waste into sustainable street furniture for public areas. People can enjoy meeting each other here and see the tangible results of their sorting efforts.

This is how we intend to collectively shape a cleaner planet with happy people.

Explore the ECO-oh! product range of benches, picnic tables, picnic sets, planters and poles.



**ECO-OH! PRODUCTS ARE 100% FULLY RECYCLED AND 100% FULLY RECYCLABLE**

## PUBLIC



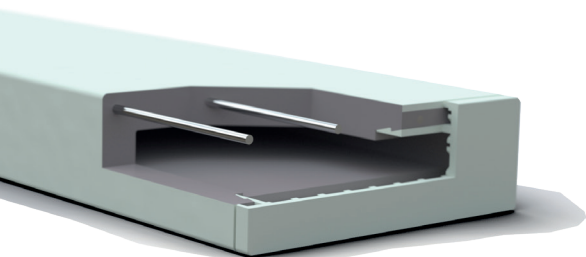
## U-BENCH

### MAKE-OVER, ALMOST IDENTICAL, BUT 100% NEW

For the U-bench only one-third of the material is used compared to the old Park bench. The steel-reinforced co-extrusion technique changes everything, giving it a permanently smooth look, a natural structure in 6 colours, a soft and appealing touch, just right for a moment to relax. Available either in standard dimensions or customized to your requirements. With or without backrest, ready for a picnic or ideal just to rest a while...

The U-bench collection is a new standard in sustainability in a stunning design.

- ✓ **Bench feet:** available in light-grey
- ✓ **Backrest, seat and table top:** available in 6 colours: light-grey, neutral-grey, dark-grey, blue, olive-green and beige
- ✓ All **weather-proof** and **UV-resistant**
- ✓ Standard length 190-230-300 or 380 cm and **customized up to 6 meters**



## U-SERIES

Art. nr.	Description	Dimensions	Weight (kg)	Colour
<b>11100LG</b>	U-bench with backrest 4x12	1900 x 685 x 830mm	55	light-grey
<b>11101LG</b>	U-bench with backrest 4x12	2300 x 685 x 830mm	63	light-grey
<b>11102LG</b>	U-bench with backrest 4x12	3000 x 685 x 830mm	77	light-grey
<b>11103LG</b>	U-bench with backrest 4x12	3800 x 685 x 830mm	80	light-grey
<b>12101LG</b>	U-bench without backrest 4x12	2300 x 380 x 450mm	40	light-grey
<b>12102LG</b>	U-bench without backrest 4x12	3000 x 380 x 450mm	50	light-grey
<b>12103LG</b>	U-bench without backrest 4x12	3800 x 380 x 450mm	60	light-grey
<b>13101LG</b>	U-table 4x12	2300 x 900 x 750mm	88	light-grey
<b>13102LG</b>	U-table 4x12	3000 x 900 x 750mm	119	light-grey
<b>13103LG</b>	U-table 4x12	3800 x 900 x 750mm	142	light-grey

### U-BENCH WITH BACKREST



Produced with profiles reinforced with steel

But still 100% recyclable

All weather-proof and UV-resistant

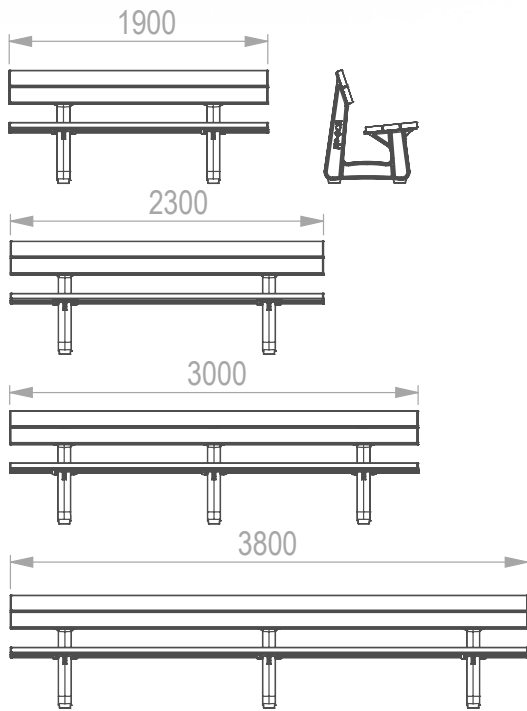
### U-BENCH WITHOUT BACKREST & U-TABLE



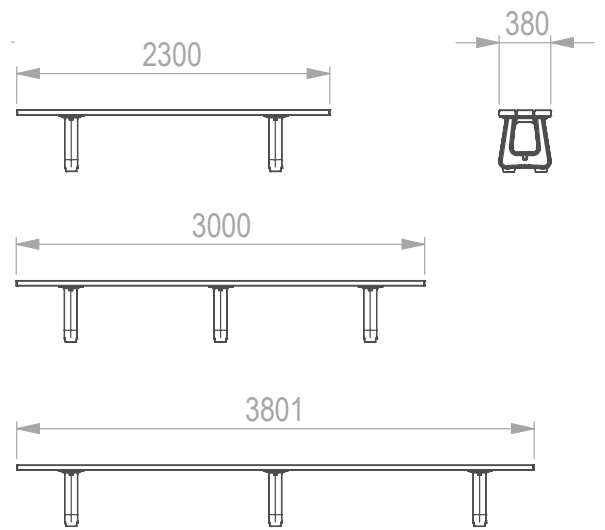
Backrest, seat and table top: available in 6 colours: blue, olive-green, beige, dark-grey, neutral-grey and light-grey



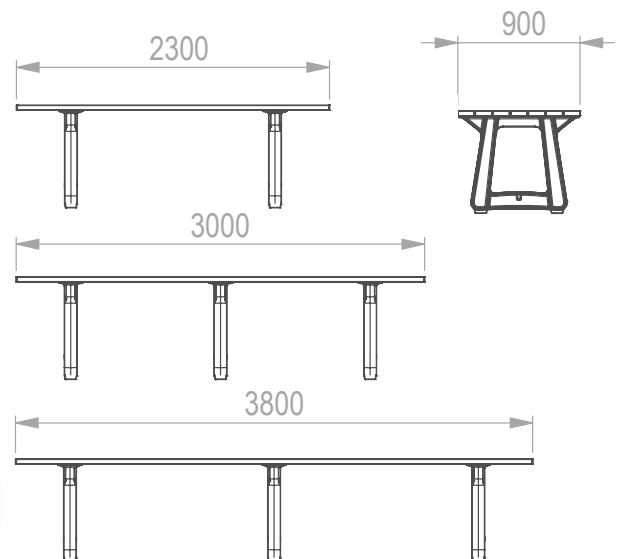
U-BENCH WITH BACKREST



U-BENCH WITHOUT BACKREST



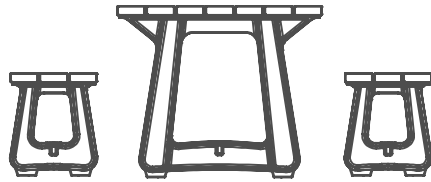
U-TABLE



---

U-BENCH WITHOUT BACKREST & U-TABLE

---



light-grey



beige



neutral-grey



olive-green



dark-grey



blue

PUBLIC

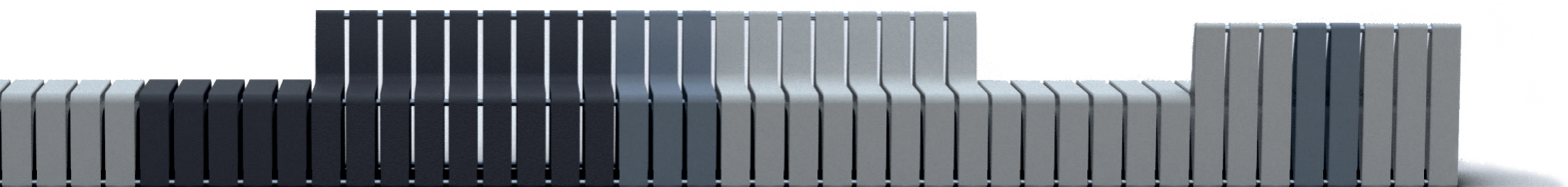


## H-BENCH

### UNLIMITED COMBINATIONS OF COLOUR, LENGTH AND SHAPE

Studio Segers has once more created an iconically designed bench made from 100% recycled post-consumer plastic. Its design combines functionality and comfort in a flexible modular concept. This allows the creation of a bench of unlimited length, combining individual low or high modules in different colours facing different directions. The H-benches introduce a comfortable design for public furniture which is a source of joy.

- ✓ Innovative production process using 100% recyclable plastic
- ✓ Esthetic and easily connected
- ✓ Unlimited combinations of the 2 elements
- ✓ Water- and UV-resistant
- ✓ Facing different directions
- ✓ Create a bench of unlimited length!
- ✓ New range in 6 colours



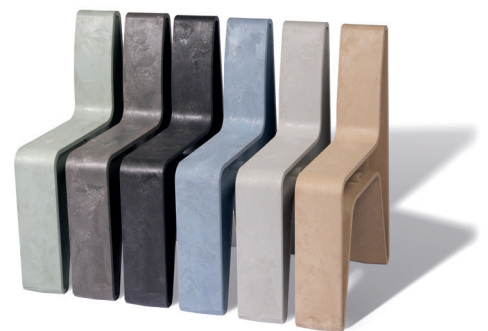
## H-BENCH

Art. nr.	Description	Dimensions	Weight (kg)	Colour
<b>75BE</b>	H-bench element with backrest	81 x 60 x 14cm	8	beige
<b>75BL</b>	H-bench element with backrest	81 x 60 x 14cm	8	blue
<b>75DG</b>	H-bench element with backrest	81 x 60 x 14cm	8	dark-grey
<b>75LG</b>	H-bench element with backrest	81 x 60 x 14cm	8	light-grey
<b>75NG</b>	H-bench element with backrest	81 x 60 x 14cm	8	neutral-grey
<b>75OG</b>	H-bench element with backrest	81 x 60 x 14cm	8	olive-green
<b>76BE</b>	H-base element without backrest	46 x 60 x 14cm	6	beige
<b>76BL</b>	H-base element without backrest	46 x 60 x 14cm	6	blue
<b>76DG</b>	H-base element without backrest	46 x 60 x 14cm	6	dark-grey
<b>76LG</b>	H-base element without backrest	46 x 60 x 14cm	6	light-grey
<b>76NG</b>	H-base element without backrest	46 x 60 x 14cm	6	neutral-grey
<b>76OG</b>	H-base element without backrest	46 x 60 x 14cm	6	olive-green

### H-BENCH ELEMENT WITH BACKREST



olive-green - neutral-grey - dark-grey -  
blue - light-grey - beige



### H-BENCH ELEMENT WITHOUT BACKREST

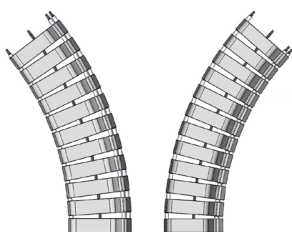


## H-BENCH

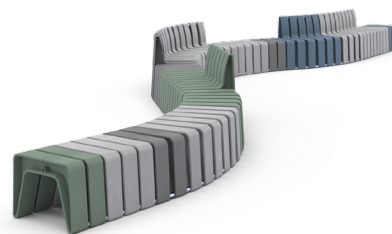
INTRODUCING **ROUND SHAPES** IN ALL DIRECTIONS

Solidarity is circular. That's why the H-bench introduces round shapes for public spaces. Surrounding a tree, creating cosiness in a town square or .... Unlimited combinations in straight or circular lines.

- ✓ Bends of 30° or 45°
- ✓ Different directions create unlimited possibilities
- ✓ Unlimited combinations of the 2 elements
- ✓ Facing different directions



Look **in**   Look **out**



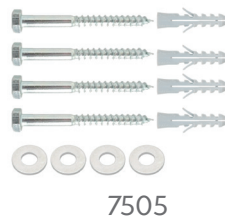
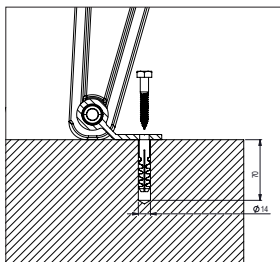
## H-BENCH

Art. nr.	Description	
<b>7501</b>	Connecting set 1	H-bench with backrest straight
<b>7502</b>	Connecting set 2	H-bench w/o backrest straight
<b>7503</b>	Connecting set 3	H-bench anchoring starter set
<b>7504</b>	Chemical Anchor	H-bench anchoring
<b>7505</b>	Anchoring bolt+plug	H-bench anchoring
<b>7506</b>	Connecting set 4	H-bench with backrest curve out
<b>7507</b>	Connecting set 5	H-bench w/o backrest curve
<b>7508</b>	Connecting set 6	H-bench with backrest curve in

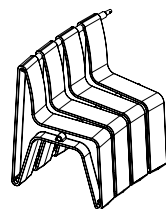
### CONNECTING SET STRAIGHT



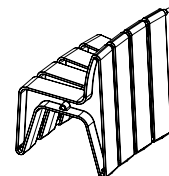
### ANCHORING BOLT+PLUG



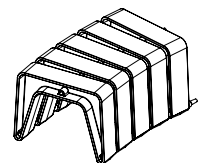
### CONNECTING SET CURVE



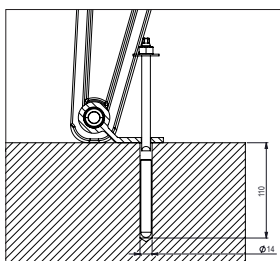
Inside curve



Outside curve



### CHEMICAL ANCHOR



PUBLIC



## ALTAMIRA

### RECYCLED PLASTIC ART THAT HONOURS NATURE

Through the Altamira Collection design stretches into art. By creating a collection of 4 benches made from 100% post-consumer plastics, the artist, François Blommaerts, honours the recycling process as a way to respect nature.

Just as in nature, the Altamira Collection is a play of waves as found in old canyons in Arizona where the artist found his inspiration for the Altamira Collection. Enjoy the lounge comfort of the benches while reflecting about life.



## ALTAMIRA COLLECTION

Art. nr.	Description	Dimensions	Weight (kg)	Colour
<b>9601B</b>	Altamira Collection Model 1	757 x 1514 x 470mm	199	grey
<b>9602B</b>	Altamira Collection Model 2	753 x 1835 x 470mm	279	grey
<b>9603B</b>	Altamira Collection Model 3	413 x 947 x 470mm	96	grey
<b>9604B</b>	Altamira Collection Model 4	699 x 2422 x 470mm	221	grey

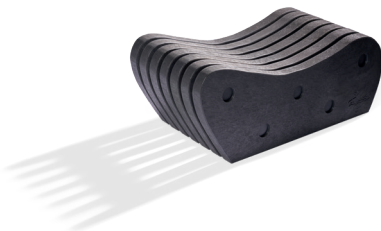
### ALTAMIRA COLLECTION MODEL 1



### ALTAMIRA COLLECTION MODEL 2



### ALTAMIRA COLLECTION MODEL 3



### ALTAMIRA COLLECTION MODEL 4



PUBLIC



## PARK SERIES

## A BENCH WITH A VISION

The Park bench with backrest brings together all the plastic waste collected by a 4-person family over 4 years. A bench made out of yoghurt pots, butter dishes and plastic bags, a bench that is 100% recyclable. This bench offers sitting comfort and ergonomics for hours of relaxation in the park, playground or city.

The Park series consists of

- ✓ a bench with backrest
- ✓ a bench without backrest
- ✓ a table
- ✓ a picnic set



## PARK SERIES

Art. nr.	Description	Dimensions	Weight (kg)	Colour
<b>1101E</b>	Park bench with backrest	2m x 38cm x 80cm	96	grey
<b>1102E</b>	Park bench without backrest	2m x 38cm x 44cm	45	grey
<b>1104E</b>	Park bench without backrest	1m x 38cm x 44cm	37	grey
<b>1103E</b>	Park table	2m x 64cm x 76cm	108	grey

### PARK BENCH WITH BACKREST

**A** 200 cm      **C** 80 cm  
**B** 38 cm      **D** 44 cm



### PARK BENCH WITHOUT BACKREST

**A** 200 cm      **A** 100 cm  
**B** 38 cm      **B** 38 cm  
**C** 44 cm      **C** 44 cm



### PARK TABLE

**A** 200 cm  
**B** 64 cm  
**C** 76 cm

PUBLIC



## FOREST SERIES

## LONG-LASTING FUNCTIONALITY

From yoghurt pot to Forest bench, this is how we give plastic waste a second life. Like the trees in the forest, ECO-oh! benches can withstand all weather conditions. Rain, snow, frost, heat and the sun's UV-rays, nothing can damage these benches. Moreover, they require little to no maintenance; they are rot-proof; and last but not least, they are 100% environmentally safe.

The robust, thick profiles of the Forest bench guarantee intrinsic strength and rigidity. This series can really take a beating. Schools and public parks will be happy to make use of these.

The Forest series consists of a bench with or without backrest, a table and a picnic set.



## FOREST SERIES

Art. nr.	Description	Dimensions	Weight (kg)	Colour
<b>1201</b>	Forest bench with backrest	2m x 40cm x 80cm	117	grey
<b>1202</b>	Forest bench without backrest	2m x 40cm x 46cm	68	grey
<b>1204</b>	Forest bench without backrest	1m x 40cm x 46cm	43	grey
<b>1203</b>	Forest table	2m x 80cm x 78cm	146	grey

### FOREST BENCH WITH BACKREST

- A** 200 cm
- B** 40 cm
- C** 46 cm
- D** 80 cm



### FOREST TABLE



- A** 200 cm
- B** 80 cm
- C** 78 cm

### FOREST BENCH WITHOUT BACKREST



- A** 200 cm
- B** 40 cm
- C** 46 cm

PUBLIC



PICNIC

MEET AND HAVE FUN

In the park, playground or school, the woods or at work, there's a suitable picnic set for every area.

The one-piece picnic benches and table give new life to household plastic waste.

- ✓ Long-lasting functionality
- ✓ Sturdy
- ✓ Maintenance-free and weather-resistant

In short: steadfast for years.



## PICNIC

Art. nr.	Description		Dimensions	Weight (kg)	Colour
<b>1401</b>	Park series picnic set	unassembled	200cm x 156cm x 76cm	240	grey
<b>1402</b>	Park series picnic set	assembled	200cm x 156cm x 76cm	240	grey
<b>1403</b>	Forest series picnic set	unassembled	200cm x 156cm x 76cm	255	grey
<b>1404</b>	Forest series picnic set	assembled	200cm x 156cm x 76cm	255	grey
<b>1407</b>	Children's picnic set	unassembled	150cm x 90cm x 55cm	118	grey
<b>1408</b>	Children's picnic set	assembled	150cm x 90cm x 55cm	118	grey

### PARK PICNIC SET

**A** 200 cm    **C** 76 cm    **E** 64 cm  
**B** 31 cm    **D** 48 cm    **F** 156 cm



### CHILDREN'S PICNIC SET

**A** 150 cm    **C** 55 cm    **E** 47 cm  
**B** 15 cm    **D** 31 cm    **F** 90 cm



### FOREST PICNIC SET

## PUBLIC



## ANCHORING

## PARK, FOREST, PICNIC SERIES

The tables, benches and picnic sets from our Forest and Park product series can be fixed on soft ground using our anchoring base feet made from recycled plastic.

An anchoring base foot weighs 18 kg and is trapezium shaped. You will need two base feet to fix one bench or table. Place each bench foot on top of the buried base foot using an anchoring bolt (M12x200 mm).

We offer suitable bolts separately. The bench feet of the Forest and Park series furniture are pre-drilled for this purpose.

To fix the **Forest and Park series** furniture on paved ground or concrete, use an anchoring bolt and plug (2 of each per bench or table). We offer suitable bolts and plugs separately.



Art. nr.	Description	Dimensions	Weight (kg)	Colour
<b>1004</b>	Anchoring base for Park, Forest and picnic series	45 x 30 x 30cm	18	grey
<b>1005</b>	Anchoring bolt for anchoring base	M12 x 200mm		
<b>1006</b>	Anchoring bolt + plug for concrete anchoring	M12 x 200mm		

## PUBLIC - PLANTERS

### ECO-OH! PLANTERS

Timeless, reliable and elegant  
Flexible application in a public area

Made of household plastic waste and with a sleek design, ECO-oh! planters attract attention in the streets. In parking lots, roads, school yards and in parks, they bring plants and flowers to life.

With many designs and sizes depending upon your needs. They can be fitted with reflectors and are easy to move thanks to the beams on the underside.



PUBLIC



## QUERCUS

## DURABLE AND ROBUST

With Quercus, ECO-oh! is offering an extensive range of planters in various sizes. Durable and robust shapes, timeless and elegant. Suitable for parks, squares, schools or as a traffic-slowing measure on the road.

- ✓ Timeless planters
- ✓ Robust and elegant
- ✓ Available with or without reflectors



---

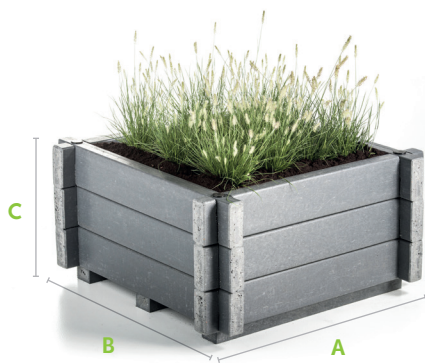
### PLANTERS QUERCUS

---

**A** 70 cm | 100 cm | 150 cm | 170 cm

**B** 70 cm | 100 cm | 150 cm | 170 cm

**C** 2-layers: 30 cm | 3-layers: 45 cm | 4-layers: 60 cm | 5-layers: 75 cm



## PLANTERS QUERCUS

Art. nr.	Description	Dimensions	Weight (kg)	Colour
<b>21022</b>	Planter Quercus	70cm x 70cm x 30cm	61	grey
<b>21023</b>	Planter Quercus	70cm x 70cm x 45cm	86	grey
<b>21024</b>	Planter Quercus	70cm x 70cm x 60cm	112	grey
<b>21025</b>	Planter Quercus	70cm x 70cm x 75cm	137	grey
<b>21122</b>	Planter Quercus	70cm x 100cm x 30cm	79	grey
<b>21123</b>	Planter Quercus	70cm x 100cm x 45cm	110	grey
<b>21124</b>	Planter Quercus	70cm x 100cm x 60cm	140	grey
<b>21125</b>	Planter Quercus	70cm x 100cm x 75cm	171	grey
<b>21222</b>	Planter Quercus	70cm x 150cm x 30cm	108	grey
<b>21223</b>	Planter Quercus	70cm x 150cm x 45cm	148	grey
<b>21224</b>	Planter Quercus	70cm x 150cm x 60cm	187	grey
<b>21225</b>	Planter Quercus	70cm x 150cm x 75cm	227	grey
<b>21322</b>	Planter Quercus	70cm x 170cm x 30cm	119	grey
<b>21323</b>	Planter Quercus	70cm x 170cm x 45cm	162	grey
<b>21324</b>	Planter Quercus	70cm x 170cm x 60cm	205	grey
<b>21325</b>	Planter Quercus	70cm x 170cm x 75cm	248	grey
<b>21422</b>	Planter Quercus	100cm x 100cm x 30cm	97	grey
<b>21423</b>	Planter Quercus	100cm x 100cm x 45cm	133	grey
<b>21424</b>	Planter Quercus	100cm x 100cm x 60cm	169	grey
<b>21425</b>	Planter Quercus	100cm x 100cm x 75cm	205	grey
<b>21522</b>	Planter Quercus	100cm x 150cm x 30cm	123	grey
<b>21523</b>	Planter Quercus	100cm x 150cm x 45cm	168	grey
<b>21524</b>	Planter Quercus	100cm x 150cm x 60cm	213	grey
<b>21525</b>	Planter Quercus	100cm x 150cm x 75cm	258	grey
<b>21622</b>	Planter Quercus	100cm x 170cm x 30cm	144	grey
<b>21623</b>	Planter Quercus	100cm x 170cm x 45cm	193	grey
<b>21624</b>	Planter Quercus	100cm x 170cm x 60cm	242	grey
<b>21625</b>	Planter Quercus	100cm x 170cm x 75cm	290	grey
<b>21722</b>	Planter Quercus	150cm x 150cm x 30cm	178	grey
<b>21723</b>	Planter Quercus	150cm x 150cm x 45cm	232	grey
<b>21724</b>	Planter Quercus	150cm x 150cm x 60cm	286	grey
<b>21725</b>	Planter Quercus	150cm x 150cm x 75cm	340	grey
<b>21822</b>	Planter Quercus	150cm x 170cm x 30cm	202	grey
<b>21823</b>	Planter Quercus	150cm x 170cm x 45cm	260	grey
<b>21824</b>	Planter Quercus	150cm x 170cm x 60cm	317	grey
<b>21825</b>	Planter Quercus	150cm x 170cm x 75cm	375	grey
<b>21922</b>	Planter Quercus	170cm x 170cm x 30cm	242	grey
<b>21923</b>	Planter Quercus	170cm x 170cm x 45cm	303	grey
<b>21924</b>	Planter Quercus	170cm x 170cm x 60cm	364	grey
<b>21925</b>	Planter Quercus	170cm x 170cm x 75cm	425	grey



## AESCULUS

## AN OUTSPOKEN HINT OF URBANISM

The broad profiles give the planters a sleek, chic look. The standard range offers many shapes and sizes.

VARY THE DESIGN TO FIT YOUR NEEDS.

- ✓ Square
- ✓ Rectangle
- ✓ Hexagon
- ✓ Octagon

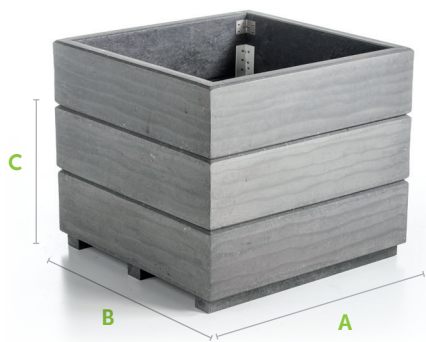


PLANTER AESCULUS

Art. nr.	Description	Dimensions	Weight (kg)	Colour
<b>22021</b>	Planter Aesculus	hexagon 27cm	96	grey
<b>22022</b>	Planter Aesculus	hexagon 54cm	154	grey
<b>22121</b>	Planter Aesculus	octagon 27cm	96	grey
<b>22122</b>	Planter Aesculus	octagon 54cm	154	grey
<b>22221</b>	Planter Aesculus	100cm x 50cm x 27cm	58	grey
<b>22222</b>	Planter Aesculus	100cm x 50cm x 54cm	101	grey
<b>22321</b>	Planter Aesculus	200cm x 50cm x 27cm	98	grey
<b>22322</b>	Planter Aesculus	200cm x 50cm x 54cm	170	grey
<b>22323</b>	Planter Aesculus	200cm x 50cm x 81 cm	242	grey
<b>22421</b>	Planter Aesculus	100cm x 100cm x 27cm	83	grey
<b>22422</b>	Planter Aesculus	100cm x 100cm x 54cm	141	grey
<b>22423</b>	Planter Aesculus	100cm x 100cm x 81 cm	199	grey

PLANTER AESCULUS - SQUARE

**A** 100 cm      **C** inside height 1-layer: 27 cm  
**B** 100 cm      2-layers: 54 cm, 3-layers: 81 cm

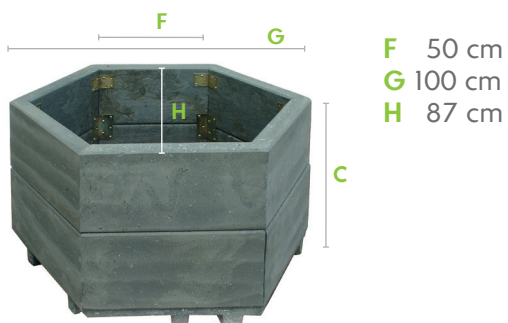


PLANTER AESCULUS - RECTANGLE

**D** 100 cm | 200 cm  
**E** 50 cm

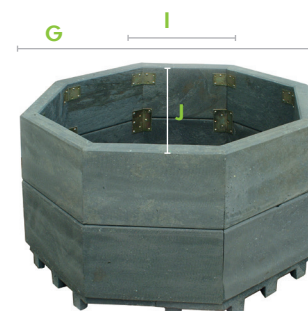


PLANTER AESCULUS - HEXAGON



**F** 50 cm  
**G** 100 cm  
**H** 87 cm

PLANTER AESCULUS - OCTAGON



**I** 42 cm  
**G** 100 cm  
**J** 100 cm



## PYRUS

## SMART, SIMPLE MARKING

With Pyrus, we are offering a tailored concept in planters for every environment. Indestructible, maintenance-friendly and easy to place.

- ✓ Perfectly suited for defining a specific area
- ✓ Modular and versatile



---

**PLANTER PYRUS**


---

Art. nr.	Description	Dimensions	Weight (kg)	Colour
<b>23014</b>	Planter Pyrus	90cm x 90cm x 44cm	84	grey
<b>23015</b>	Planter Pyrus	100cm x 100cm x 44cm	84	grey
<b>23109</b>	Planter Pyrus	70cm x 70cm x 44cm	44	grey
<b>23110</b>	Planter Pyrus	70cm x 70cm x 66cm	62	grey
<b>23114</b>	Planter Pyrus	120cm x 100cm x 66cm	113	grey
<b>23120</b>	Planter Pyrus	100cm x 30cm x 66cm	131	grey
<b>23121</b>	Planter Pyrus	100cm x 30cm x 88cm	53	grey
<b>23129</b>	Planter Pyrus	100cm x 50cm x 44cm	75	grey
<b>23130</b>	Planter Pyrus	100cm x 50cm x 66cm	78	grey
<b>23131</b>	Planter Pyrus	100cm x 60cm x 66cm	49	grey
<b>23132</b>	Planter Pyrus	115cm x 40cm x 88cm	84	grey
<b>23135</b>	Planter Pyrus	100cm x 70cm x 44cm	105	grey
<b>23140</b>	Planter Pyrus	100cm x 100cm x 66cm	129	grey
<b>23141</b>	Planter Pyrus	100cm x 100cm x 88cm	100	grey
<b>23152</b>	Planter Pyrus	120cm x 60cm x 66cm	92	grey
<b>23153</b>	Planter Pyrus	120cm x 70cm x 44cm	67	grey
<b>23154</b>	Planter Pyrus	120cm x 70cm x 66cm	112	grey
<b>23155</b>	Planter Pyrus	120cm x 80cm x 66cm	112	grey
<b>23158</b>	Planter Pyrus	120cm x 120cm x 44cm	112	grey
<b>23159</b>	Planter Pyrus	120cm x 120cm x 66cm	99	grey

---

**PLANTER PYRUS**


---

- A** Length on request, max. 120 cm  
**B** Width on request, max. 120 cm  
**C** Height inside 2-layers: 44 cm | 3-layers: 66 cm | 4-layers: 88 cm



### ECO-OH! POSTS THEY SUPPORT EFFECTIVE TRAFFIC ORGANISATION

ECO-oh! posts can be used for various applications. They are sturdy, weather-resistant, durable, splinter-free and rot-resistant, so they add value to any outdoor application. Specific models have also been developed for road safety applications. For increased safety, square posts are also available with smoothed corners.

DURABLE FOR GIVING DIRECTIONS, CREATING SAFETY, AND SEPARATING PATHS AND SANDBOXES.

For increased safety, square posts are also available with smoothed corners.

- ✓ Durable for giving directions
- ✓ Creating safety
- ✓ Creating separation
- ✓ Creating paths and sandboxes





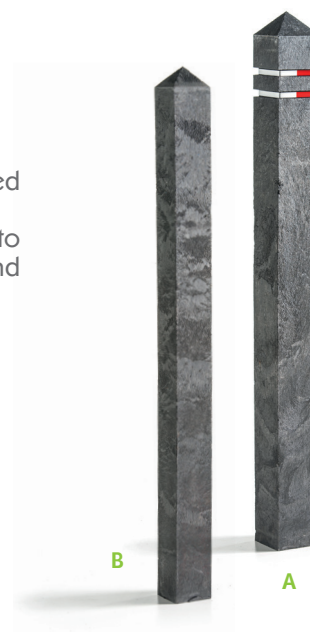
**DIAMOND-TOPPED POST**

Art. nr.	Description	Dimensions	Weight (kg)	Colour
<b>6601</b>	Diamond-topped post	10cm x 10cm x 180cm	16	grey
<b>6602</b>	Diamond-topped post	12cm x 12cm x 150cm	21	grey
<b>6603</b>	Diamond-topped post	14cm x 14cm x 150cm	26	grey
<b>6604</b>	Diamond-topped post with 2 grooves/reflectors	14cm x 14cm x 150cm	26	grey
<b>6003</b>	Surface-mounted reflector	8cm x 12cm		
<b>6004</b>	Surface-mounted reflector	4cm x 18cm		
<b>6007</b>	Galvanised ground sleeve with lock	50cm x 30cm x 30cm		
<b>6005</b>	Smoothed edges	per side		

**A** 14 cm x 14 cm x 150 cm  
This diamond-topped post can be equipped with reflector bands and/or mounted reflectors. The reflector band is recessed into the post. For this type, a galvanised ground fastener with lock is available.

**B** 12 cm x 12 cm x 150 cm  
Can only be equipped with mounted reflectors.

**C** 10 cm x 10 cm x 180 cm  
Can only be equipped with mounted reflectors.





LET YOUR  
CREATIVITY RUN WILD

---

GARDEN **POST** HALF MOON

---

Art. nr.	Useful diameter	Dimensions	Weight (kg)	Colour
<b>6301</b>	11 cm	15cm x 60cm	7	grey
<b>6302</b>	11 cm	15cm x 120cm	13	grey
<b>6303</b>	11 cm	15cm x 150cm	16	grey
<b>6304</b>	11 cm	15cm x 180cm	20	grey

GARDEN **POST** HALF MOON

ECO-oh! half moon garden posts can be used for the edging of a playground, sandbox or pet toilet. Moreover, these palisade posts are very useful for removing differences of level in the garden.

GARDEN POST HALF MOON

BEVELLED POST

Dimensions:  
12 x 12 x 150 cm  
14 x 14 x 150 cm  
Bevel 45°



Length: 60, 120, 150, 180 cm  
Diameter: 15 cm  
Useful diameter: 11 cm



This square post with bevelled top works well as a direction indicator for walking, riding and mountain biking trails.

BEVELLED POST

Art. nr.	Description	Dimensions	Weight (kg)	Colour
<b>6101</b>	Bevelled post - 45°	14cm x 14cm x 150cm	25	grey
<b>6102</b>	Bevelled post - 45°	12cm x 12cm x 150cm	21	grey





## PENCIL POST

Art. nr.	Description	Dimensions	Colour
<b>6401</b>	Pencil post round	15cm x 150cm	grey
<b>6403</b>	Pencil post round	15cm x ...cm - lengths up to 280cm	grey
<b>6404</b>	Pencil post round	15cm x 180cm	grey

AMSTERDAMMER

Art. nr.	Description	Dimensions	Weight (kg)	Colour
<b>6701</b>	Amsterdammer	length: 100cm; base diameter: 17cm	10	grey
<b>6702</b>	Reflector band for Amsterdammer			

AMSTERDAMMER

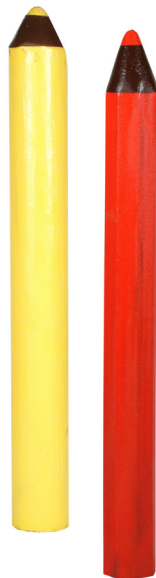
The Amsterdammer can be equipped with a recessed reflector band.  
 Length: 100 cm  
 Base diameter: 17 cm



PENCIL POST

The pencil post increases the safety of a particular area in a unique but simple manner.

Diameter: 15 cm  
 Length: 150, 180, 200, 220, 250, 280 cm



MUSHROOM POST

The mushroom post can be equipped with recessed reflector bands.

Length: 150 cm  
 Diameter base: 15 cm  
 Diameter top: 16 cm



MUSHROOM POST

Art. nr.	Description	Dimensions	Colour
<b>6703</b>	mushroom post	Length: 150cm; diameter top: 16cm; base: 15cm	grey





---

## CONTACT

---

### **ECO-oh! Distribution bvba**

Europark 1075  
3530 Houthalen-Helchteren  
Belgium  
Tel: +32 (0)11 45 41 46  
E-mail: [info@eco-oh.com](mailto:info@eco-oh.com)  
Website: [www.eco-oh.com](http://www.eco-oh.com)  
BTW: BE 0630 639 164  
IBAN: BE 18 7350 4132 0065  
BIC/SWIFT: KREDBEBB

---

## GENERAL INFO

---

- Photography: PSGstudio & ECO-oh! Distribution bvba
- Design: ECO-oh! Distribution BVBA
- Responsible publisher: Koen Verhaert, B-2480 Dessel.

© 2019 - Full or partial copying of text or images without written permission of the responsible publisher is prohibited. ECO-oh! Distribution BVBA can't be held responsible for possible changes and printing errors.



**ECO-oh! Distribution bvba**

Europark 1075 | 3530 Houthalen-Helchteren  
Belgium

Tel: +32 (0)11 45 41 46

[info@eco-oh.com](mailto:info@eco-oh.com) | [www.eco-oh.com](http://www.eco-oh.com)